

Traxtor Remote Robotic Inspection System



The **Traxtor** series of robotic crawler platforms are designed specifically for the rigorous environment of an un-cleaned coal-fired boiler. The twin drive track units equipped with powerful permanent magnet pads and unique suspension system enable the robot to traverse a wide variety of ferrous structures.

System Benefits:

- Perform current inspections in less time and with less man power (see example field inspections)
- Reduces need for safety equipment and man access to remote locations
- 1-2 man operation
- Automated data storage/report generation
- Automates many inspection processes
- Real-time data mapping and display
- Provide significantly greater data info at no extra cost
- Enable new inspection capabilities and techniques not possible before



Tube wall thickness inspection (UT, line scan), TVA Kingston Unit 9, approx. 5 mins per tube (100' length), 10 hrs per wall



Penstock tube wall thickness inspection, circumferential scan, 19ft dia, typical scan time approx. 1.5 hrs, including setup



NDE inspection, TVA South Holston Dam Surge Tank, 12 vertical passes, thickness measurement every 6 inches, total inspection time 4 hrs. including setup

Example Applications:

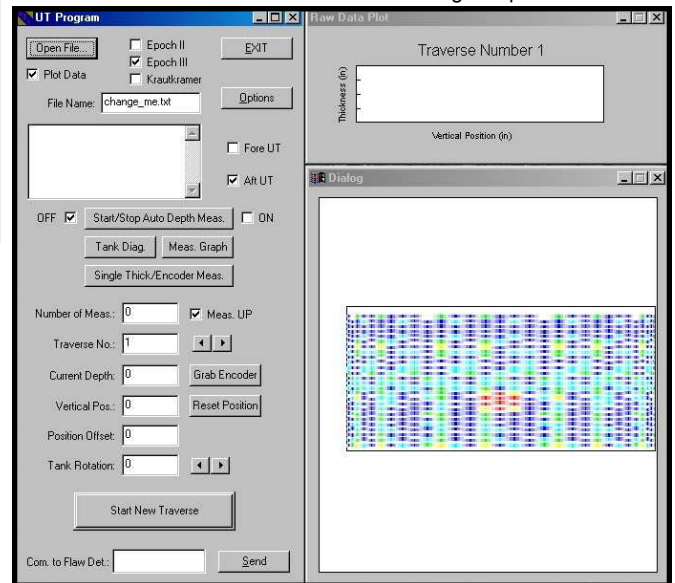
- Furnaces
- Tanks
- Penstock
- Pipes
- Steel Structures



NDE wall thickness inspection, TVA Gallatin Fuel Storage Tank, 2.5 hrs including setup

System Includes:

- Crawler platform (various payloads available)
- Self-contained power and control system
- 100' tether included (additional length available)
- Joystick operator interface
- UT transducer system
- Data logging/report generation software
- Onboard cameras, controller mounted video display
- Couplant system



Real-time flaw mapping over inspection surface

For Further Information Contact:



Synterprise, LLC
 1110 Market Street, Suite 525, Chattanooga, TN 37402
 Phone: (423) 267-5363 Web: www.synterprise.com



Stephen L. Canfield, Department of Mechanical Engineering
 Box 5014, Cookeville, TN 38505, Phone: (931) 372-6359
 E-mail: scanfield@tntech.edu Web: www.cep.tntech.edu